



If it's not Crimsafe,
it's not crim safe.





Why choose Crimsafe?

At Crimsafe, we believe there should be no compromise when it comes to the safety of you and your family. For generations, we've designed Crimsafe to be the strongest, most trusted security screen on the market, providing protection from intruders for your home, as well as many other benefits.

Our unique and innovative technology has been independently tested and shown to exceed every industry and Australian Standard. This includes our exclusive Screw-Clamp™ system that gives Crimsafe an unparalleled advantage, consistently outperforming competitor products in independent testing.

Crimsafe has many imitators, but there is simply no equivalent when it comes to security screen solutions to protect your loved ones. With a flexible range of applications and styles, there's a Crimsafe product to suit every home.

Applications and benefits:

- Hinged doors
- Sliding doors
- French doors
- Bi-Fold doors
- Stacking doors
- Fixed windows
- Hinged windows
- Sliding windows
- Safe-S-Cape® (emergency exits)
- Patio enclosures
- Fall protection
- Balustrading.

Our history

Crimsafe has been protecting Australian families for more than 25 years.

We're proud to say that we revolutionised the security screen industry with a new level of technological advancements. These include exclusive Screw-Clamp™ technology and woven structural-grade stainless steel mesh. The result is not only screens that are stronger than others in the market, but also significantly more attractive than old fashioned bars and grilles.

Today, Crimsafe is still the industry leader in stainless steel security systems. Our innovative technology ensures Crimsafe continues to provide exceptional security for homes and businesses in Australia, New Zealand and around the world.

What makes Crimsafe so strong?

Our customers expect the highest level of protection for their families, which is why we don't compromise when it comes to the quality, strength or durability of Crimsafe security screen doors and windows.



What makes Crimsafe outperform our competitors' products and exceed Australian Standards?

Thicker, stronger mesh

Crimsafe screens are harder to cut and penetrate, keeping out unwelcome guests, from burglars to bugs. Our specially developed Crimsafe Tensile-Tuff® mesh uses 0.9mm 304 structural-grade stainless steel.

Unique fastening system

Crimsafe's exclusive Screw-Clamp™ technology secures the Tensile-Tuff® mesh to the frame using tamper-resistant screws and clamps to form a vice-like grip. This reinforces our screens with exceptional strength and allows Crimsafe to withstand

tremendous force by absorbing and dispersing impact around the frame.

Constantly innovating

At our dedicated Research and Design facility, we are always working on ways to improve our products – be it through new aesthetics, or how they perform in the toughest tests across the globe.

We may be the strongest and biggest range of mesh security screen products in Australia, but we're never satisfied. We never stop looking for ways to set new benchmarks in the security screen industry.

We do it all for one reason. To make families safer in their homes. You could say, we never sleep, so you can.

Three levels of protection



Crimsafe Classic

Protect your family and your property with Crimsafe Classic, the new benchmark in security screens offering the renowned strength of Crimsafe, with smoother, cleaner lines. Reinforced with the proven strength of carbon fibre, the exclusive CF6 Screw-Clamp™ bites down on the stainless steel mesh on impact, with a vice-like grip.



Crimsafe Ultimate

Take your home security to the next level with the superior strength, versatility and architectural styling of Crimsafe Ultimate. Materials and technology combine to deliver a superior Crimsafe product that offers extraordinary resistance to attack, providing ultimate protection for your home and family that's up to seven times stronger than the Australian Standard.



Crimsafe iQ

As Australia's strongest, smartest, most technologically advanced mesh security screen door, Crimsafe iQ delivers unrivalled protection for your family, home or business. Years of development has culminated in a security screen door that has passed the toughest, most rigorous burglar-resistance test in the world – the RC2 Test; a test far more stringent than the Australian Standard.

Features	Classic	Ultimate	iQ
Strength Strength is measured as the amount of force that the screen can withstand. The Australian Standard is five impacts of 100 Joules.	5x stronger than the Australian Standard* (up to 550 Joules)	7x stronger than the Australian Standard* (up to 750 Joules)	7x stronger than the Australian Standard* (up to 750 Joules & RC2 compliant**)
Fastening method How the mesh is secured into the screen frame	Tamper resistant screws	x2 more tamper resistant screws than Classic	x2 more tamper resistant screws than Classic
Warranty Years of protection covered under your Crimsafe extended warranty	12	15	15
Mesh Crimsafe Tensile-Tuff® stainless steel mesh is 26.5% thicker than typical stainless steel mesh	0.9mm Tensile-Tuff® 304 structural grade	0.9mm Tensile-Tuff® 304 structural grade	0.9mm Tensile-Tuff® 304 structural grade
Clamping System System used to secure mesh into the frame	Carbon Fibre CF6 Screw-Clamp™ technology	Exclusive Screw-Clamp™ technology	Exclusive Screw-Clamp™ technology
Locking options Can be mechanical or electronic (allowing access by Keypad, Bluetooth or Keyfob)	Mechanical	Mechanical	Mechanical or Electronic
Locking points Number of secure points where the door locks into the frame	3	3	6 or 10

*Singular impact test. **Compliant with EN1627:2011 RC2 - the most stringent security screen test in the world.

Hinged Security Screen Doors

Keep your family safe inside and unwanted visitors outside

Hinged Security Screen Doors provide peace of mind

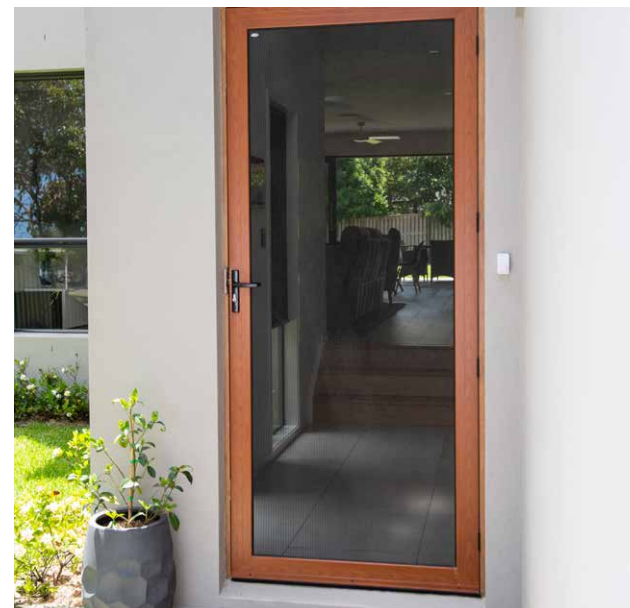
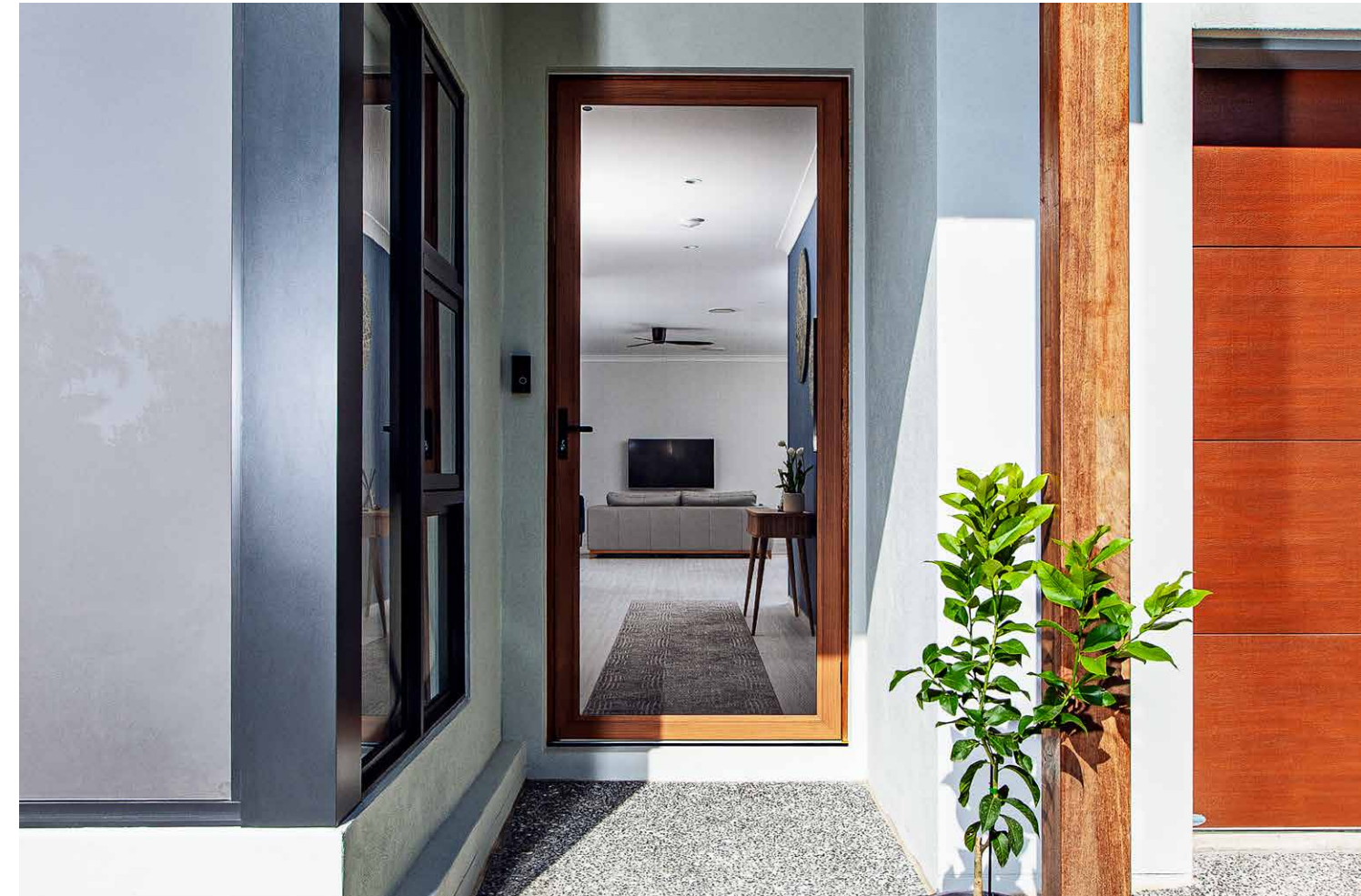
The main entry point to many homes is large, hinged doors that look solid to most people. But to a professional burglar, they can look like an easy way in.

Crimsafe Hinged Security Screen Doors bolster your defences to protect your family and precious property. Rigorous testing proves that our hinged security screen doors exceed industry standards and outperform competitors.

To achieve such strength, the Crimsafe security screen door is attached by secure hinges on one door jamb, and a secure three-point locking mechanism is installed on the opposite door jamb. This creates an incredibly strong and effective barrier between you and any uninvited guest.

Popular applications

- Front door
- Back door
- Laundry door
- Internal garage door



Benefits of our Hinged Doors

Crimsafe Hinged Security Screen Doors feature our exclusive Screw-Clamp™ system and 304 structural grade mesh. Together these superior features protect the main entry points to your home by providing:

- Three-point locking mechanism
- Made-to-measure, custom-fit for your doorway
- Optional build-out for non-standard systems
- Natural light and airflow into your home
- A choice of Classic, Ultimate and iQ ranges.

Sliding Security Screen Doors

Secure your home without hiding the view



Sliding Security Screen Doors make sense

Many Australians only look at adding flyscreens to their existing sliding door system. But wouldn't it be great if you could protect both the people and the views?

Crimsafe Sliding Security Screens are as secure as they are stylish, and can be installed in conjunction with an existing sliding door system. A locking mechanism is fitted inside the door frame and three locking points are secured in the outer frame channel. The sliding door panel is secured tightly between the tracks to prevent lateral lifting and provide smooth, easy access.

Benefits of our Sliding Doors

Crimsafe Sliding Screen Doors feature our exclusive Screw-Clamp™ system and 304 structural grade mesh. They are designed to keep insects and the burglars out, while allowing natural light and cool breezes to flow through your home. Other benefits include:

- Security across narrow or wide expanses
- More secure alternative to flyscreens
- No bars or grilles hindering views
- Screens that can slide to the right or left
- A design that prevents lateral lifting.

Stacking Security Screen Doors

A neat way to create stacks of living space



The versatility of Stacking Security Screen Doors

If you love the versatility of stacking doors, Crimsafe has a perfectly paired solution. Crimsafe Stacking Security Screen Doors are an easy-to-use solution that allows your doorway to transform from totally secure, to open and welcoming. The panels can be configured to lock in the centre or along the door jambs on either the right or left, allowing maximum compatibility.

Each panel interlocks at the frame edge meeting point. Once the connection has been made, and the meeting panels have been locked together, you can enjoy peace of mind, natural light and airflow, connecting your home's interior with outdoor entertaining spaces.

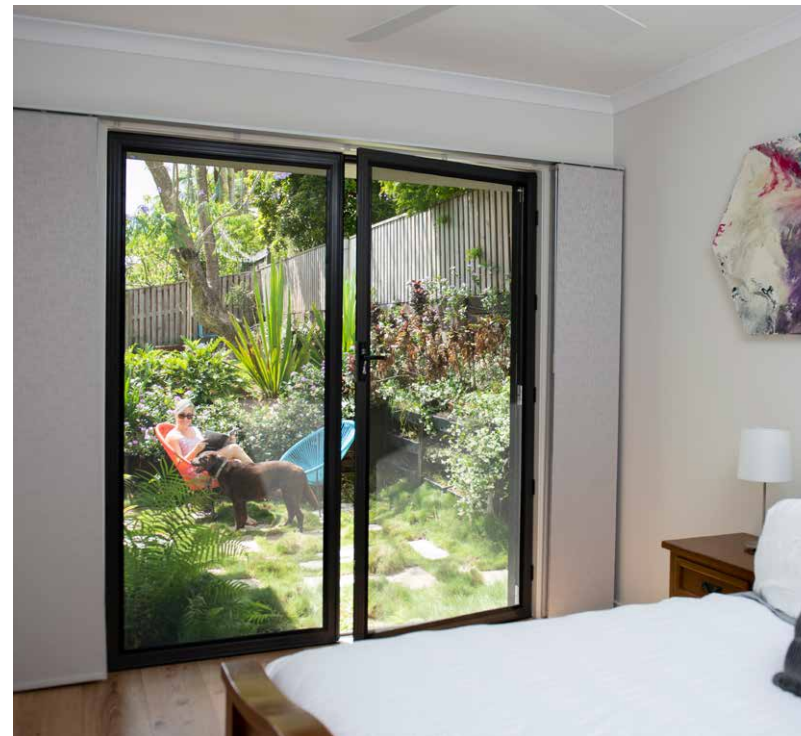
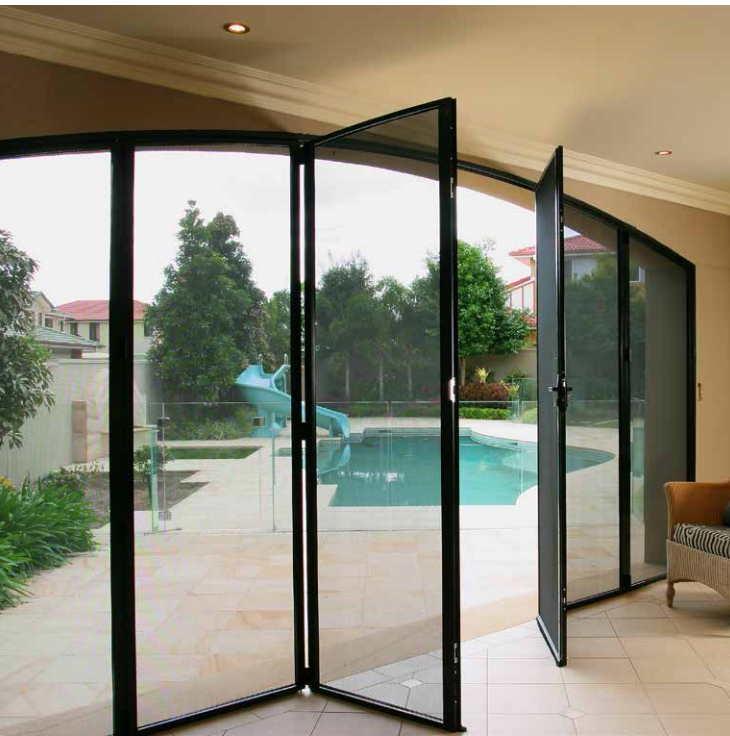
Benefits of our Stacking Doors

Crimsafe Stacking Screen Doors feature our our exclusive Screw-Clamp™ system and 304 structural grade mesh. They can be neatly stacked away or locked together to form a secure barrier. Other benefits include:

- A secure interlocking panel design
- Panels that stack away in front of each other
- A clear view without bars or grilles
- An extremely versatile open plan solution
- Natural light and airflow into your home.

French Security Screen Doors

A stylish security solution



French Security Screen Doors for style and safety

French doors are sometimes targeted by burglars who see them as an easy break-in point. That's why Crimsafe developed French door security screens. One screen is bolted top and bottom to provide rigid strength, while the other screen locks to it with a three-point mechanism that triples the headaches for burglars. Anyone thinking about a quick and quiet break-in, will need to think again.

Best of all, the need for security won't compromise the style of your home. Crimsafe's design mirrors the form and function of your current doors to create a stylish visual balance.

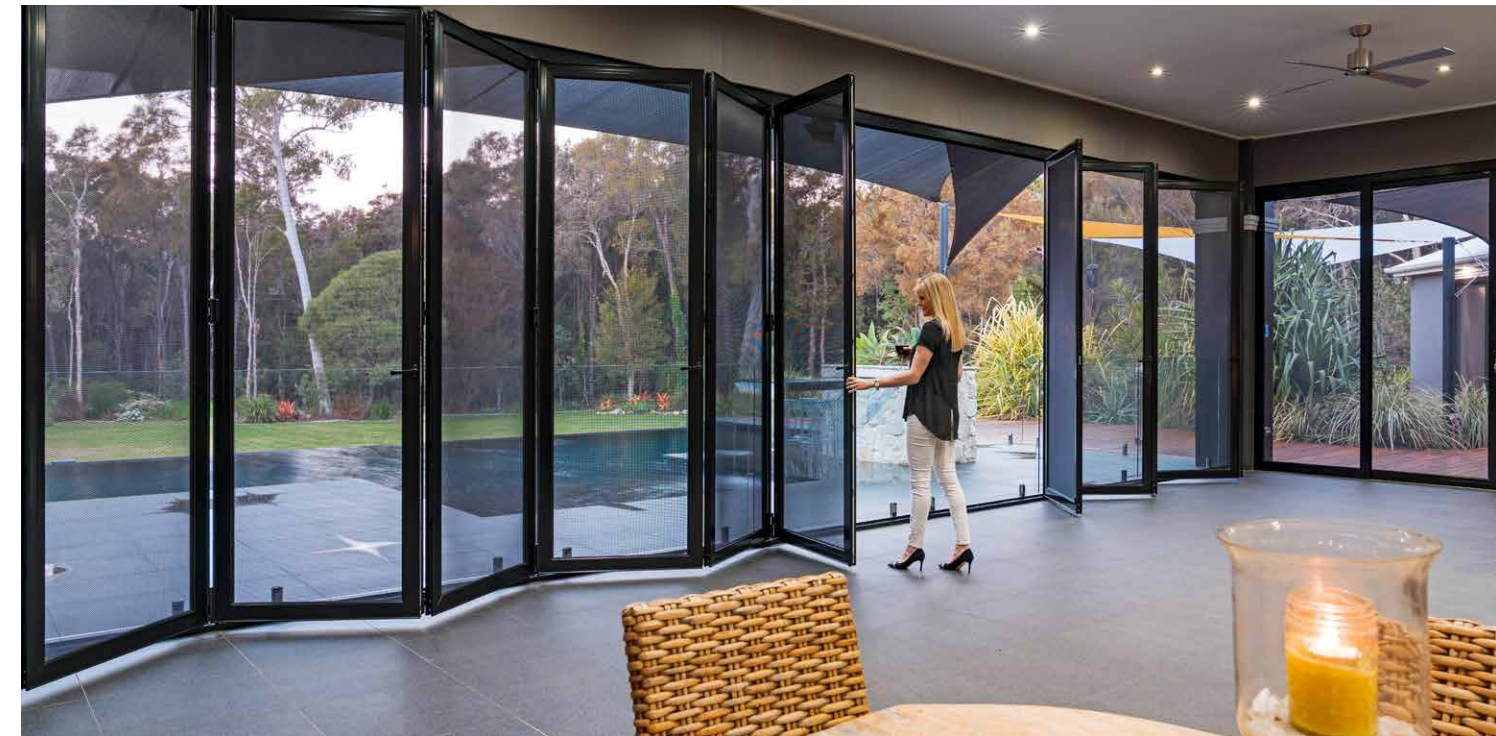
Benefits of our French Doors

If you like the look of French doors, but you're concerned that they might not be secure enough, Crimsafe's exclusive Screw-Clamp™ system and 304 structural grade mesh is the answer. Our French Door Security Screens offer several benefits, as they;

- Fit over the top of your existing doors
- Have a triple locking mechanism
- Provide a barrier to flies and mosquitoes
- Are made-to-measure for a perfect fit.

Bi-Fold Security Screen Doors

Open the whole wall with fold-away security



Create more flow with Bi-Fold Security Screen Doors

If you like the idea of opening your home up and letting the fun flow out into the yard, Crimsafe Bi-Fold Security Screen Doors could be the perfect solution for your home.

Our multi-panel hinged door design can secure the widest of indoor/outdoor spaces. You'll enjoy natural airflow when the screens are closed, and the panels easily fold away when you want to remove the line between indoor and outdoor living.

Benefits of our Bi-Fold Doors

Crimsafe Bi-Fold Security Screen Doors are ideal for decks, enclosures and a variety of expansive openings. They are made to measure, feature our exclusive Screw-Clamp™ technology, and can be fitted to complement existing glazed bi-fold doors, or as a stand-alone security screen solution. They also:

- Work to a height of up to 3 metres
- Offer a choice of panel widths
- Can be hinged to fold in or out
- Have multiple locking points
- Concertina from the middle or side
- Have no bars or grilles to hinder your view
- Are available in the Crimsafe Ultimate range.

Hinged Window Security Screen

Locked for security and hinged for convenience

The convenience of Hinged Window Security Screens

Burglars don't just target the main entrances to your home. They often check to see if there's a side window that can give them an easy way in. This is why Crimsafe has designed a hinged security screen that can be fitted to a variety of operable window types.

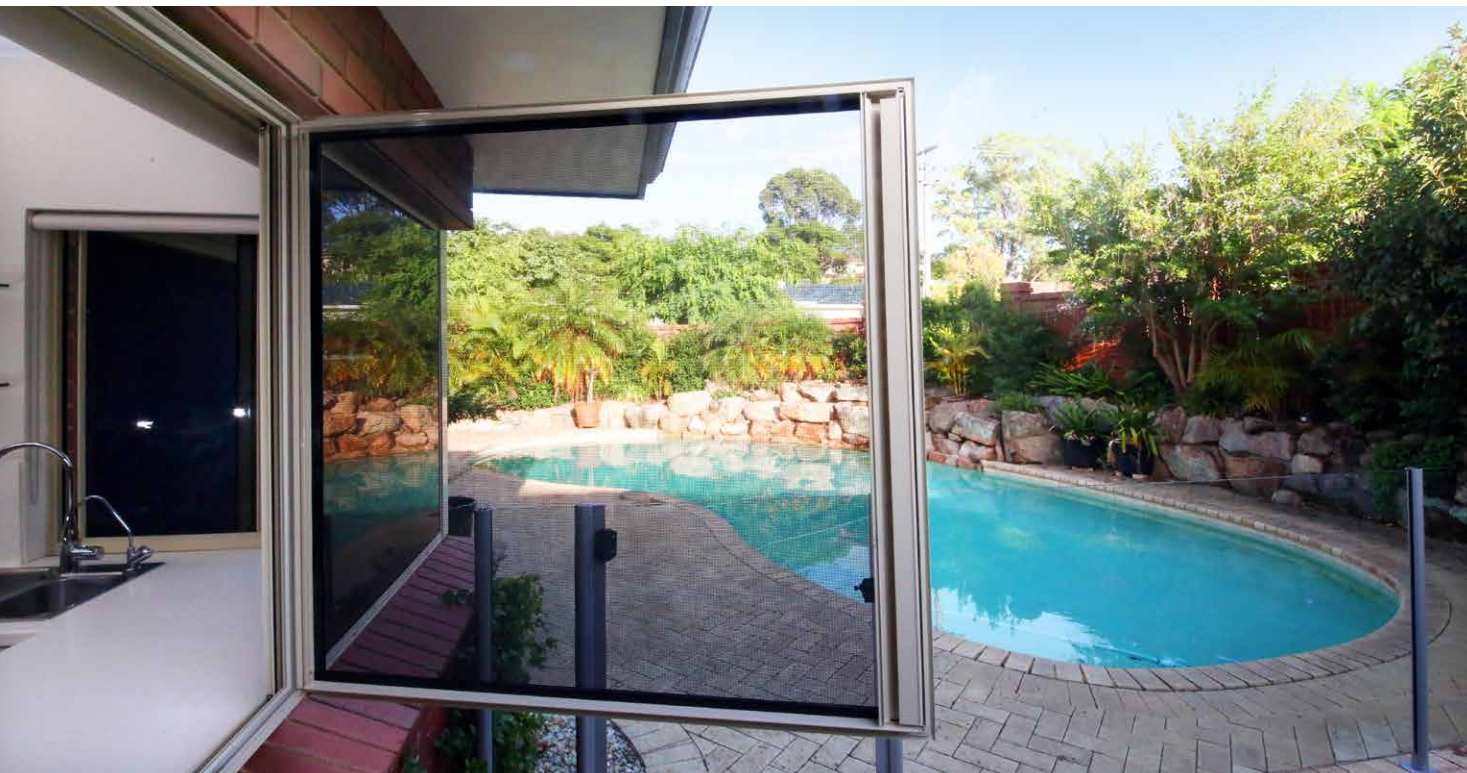
The design is ideal for single and multi-panel sliding windows, double-hung windows, single and multiple hoppers, casement windows, louvres, and fixed or sliding combinations. You decide if you'd prefer the screen to open to the left or right, or be hinged at the top. You can also decide if the screen opens inward or outward.

When a Crimsafe Hinged Window Screen is locked into place, you have a strong barrier to deter intruders while your family can continue to enjoy a natural airflow through the room.

Benefits of our Hinged Windows

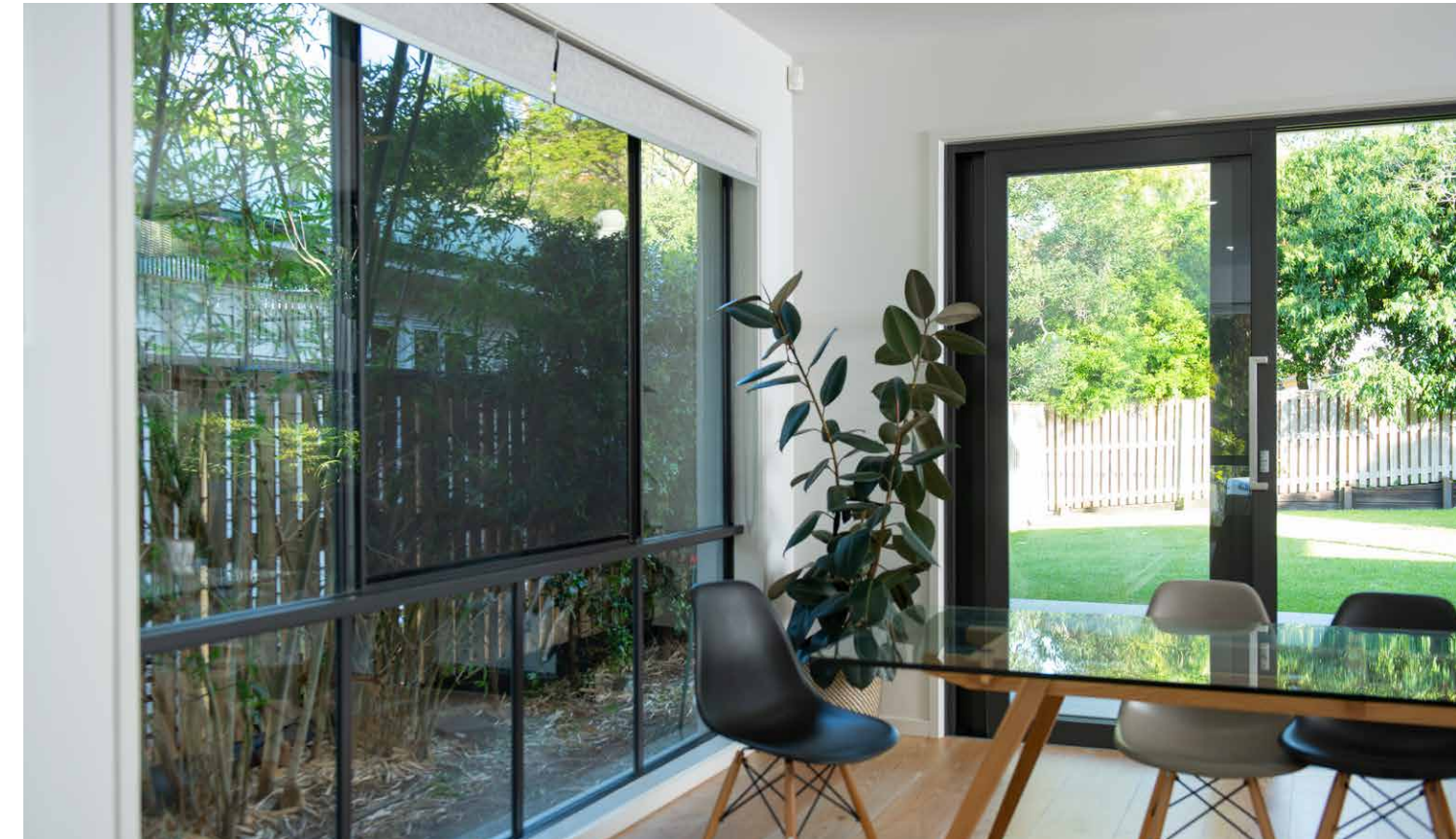
Crimsafe Hinged Window Security Screens feature our exclusive Screw-Clamp™ system and 304 structural grade mesh to provide a secure barrier for your home. They also:

- Can be hinged to open to the left or right
- Are available with multiple locking options
- Can be fitted over the top of existing windows
- Can be installed to hinge along your existing jamb
- Are made-to-measure to ensure a perfect fit
- Can be opened for easy cleaning
- Keeps flies and mozzies out
- Form an essential part of your emergency exit plan
- Are available in the Crimsafe Ultimate range.



Fixed Window Security Screen

Letting the air in. Keeping the crims out



Fixed Window Security Screens are a popular choice

Many homes across Australia are fitted with Crimsafe's Fixed Window Screens. Once the screens are locked into place, you can open your window and let the natural breezes flow through the room. This makes them a particularly good solution for homeowners with sash windows or louvres.

Crimsafe Fixed Window Screens can be fitted into the flyscreen track of the window. They can also be outside mounted or within an existing frame, depending on the visual finish you prefer.

Benefits of our Fixed Window Screens

Crimsafe Fixed Window Security Screens feature our exclusive Screw-Clamp™ system and 304 structural grade mesh to provide a secure barrier for your home. They also:

- Are made-to-measure for a perfect fit
- Block 53% of solar heat gain and 62% of UV rays
- Keeps flies and mozzies out
- Allow air-flow and natural light into your home.

Sliding Window Security Screen

Protect your home. Preserve your view



Strengthen your defences with Sliding Window Security Screens

Sliding windows are extremely popular, as are the sliding insect screens installed in many homes. Unfortunately, while these screens may be good at keeping out bugs, they're not very good at keeping out intruders. That's why you should insist on Crimsafe Sliding Window Screens.

Crimsafe has designed a sliding security screen for single and multi-panel sliding windows. The screens can be custom fitted to a variety of window shapes and sizes. All Crimsafe Sliding Windows feature our exclusive Screw-Clamp™ technology for optimum strength.

Benefits of our Sliding Windows

Crimsafe Sliding Window Screens keep the mozzies and the burglars out. And they do it with style.

There are no bars or grilles, which means your view is uninterrupted. With Crimsafe you get:

- A stonger, more secure alternative to flyscreen
- Optional build-out for non-standard systems
- Natural light and airflow into your home
- Screens that can slide to the right or left
- A design that prevents lateral lifting.

Emergency Exits

Make Crimsafe part of your emergency exit plan



Get out fast with Safe-S-Cape

Locking your house down to feel safe and secure makes sense, but it's important to keep in mind that you're also locking you and your family in. At Crimsafe, we believe it's always good to have a fast way to get out of your home in an emergency. That's why we designed the unique Safe-S-Cape Security System for windows.

Safe-S-Cape Security Screens don't need a key. You can unlock them from the inside with the push of a button. And because you want to have the easiest exit possible, you get to decide whether the screen swings in or out when it's opened.

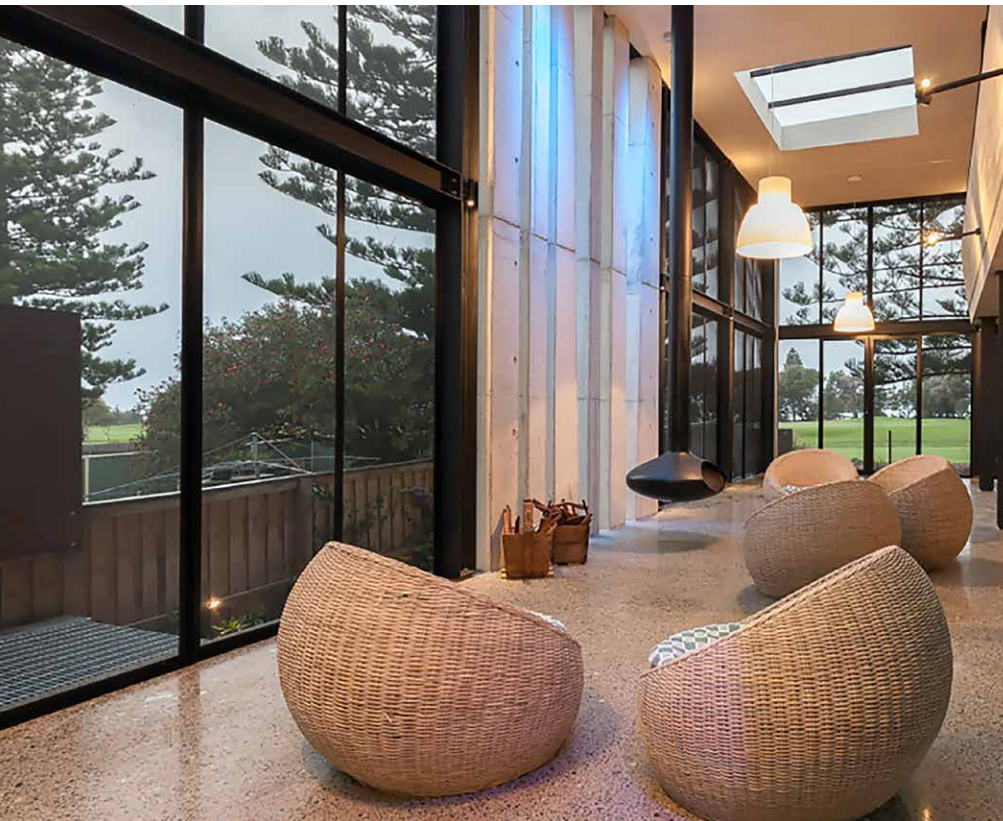
Benefits of our Safe-S-Cape

Safe-S-Cape Window Screens have all the super strength you expect from Crimsafe, and they are easy to open from the inside. There are a number of Safe-S-Cape benefits worth considering:

- Open from the inside without a key
- Made-to-measure for a perfect fit
- Feature our exclusive Screw-Clamp™ technology
- Blocks 53% of solar heat gain and 62% of UV rays.

Patio Enclosures

Crimsafe is the perfect patio solution



Crimsafe patio screens protect your favourite place

Australian's love a patio as a place to sit back and enjoy sunshine, breezes, or if you're lucky, an impressive view. The catch is that patios are often accessible to intruders, flies and all kinds of annoying bugs. To combat this, Crimsafe has designed customisable patio enclosures.

Crimsafe patio enclosures are designed to adapt to an existing space, or create a new one for your home. Best of all, Crimsafe patio enclosures are super strong thanks to our exclusive Screw-Clamp™ system and 304 structural grade mesh.

Benefits of our Patio Enclosures

Crimsafe patio enclosures keep flies and mozzies out and provide a secure barrier for your home. They also:

- Fit perfectly because they are made-to-measure
- Block 53% of solar heat gain and 62% of UV rays
- Work for various heights and span widths
- Can incorporate hinged, sliding or bi-fold doors
- Offer floor to ceiling protection
- Suit older homes and modern architecture
- Have optional midrails to create a sight line.

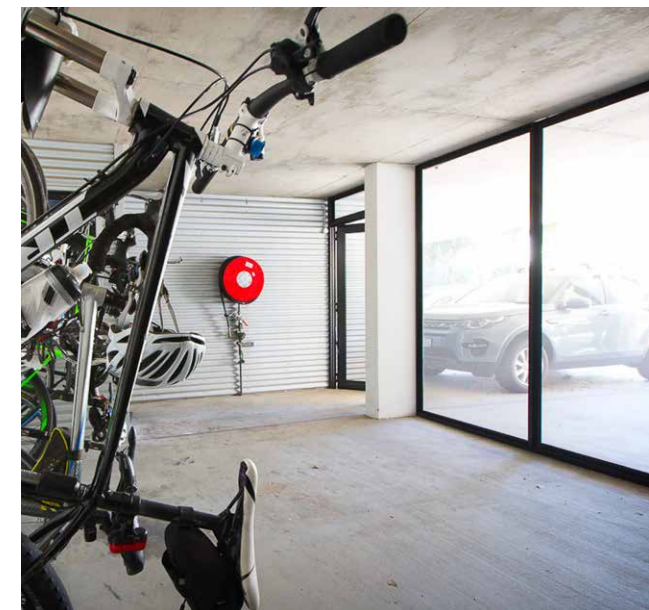
Garages and Storage Areas

Protect your vehicles and property

Crimsafe for secure storage

Garages and storage areas can be targets for thieves, as they are often full of valuables but can be left unattended for periods of time. By securing garages and storage areas with Crimsafe, you gain several benefits including;

- Protecting your possessions from theft
- Protecting against hail and storm debris
- Allowing airflow to prevent mould and mildew
- Providing visibility through the mesh so intruders are more likely to be detected.



The Crimsafe range

Crimsafe Classic

The new benchmark in security screens

Protect your family and your property with Crimsafe Classic, the new benchmark in security screens offering the renowned strength of Crimsafe, with smoother, cleaner lines.

Reinforced with the proven strength of carbon fibre, the exclusive CF6 Screw-Clamp™ bites down on the stainless steel mesh on impact with a vice-like grip. This is why Crimsafe Classic can withstand an impact that is five times stronger than the level required by the Australian Standard.

With Crimsafe Classic, there's no need to compromise on looks to achieve high-performance security. This newly-engineered frame, with no visible screws, fits seamlessly into any home or lifestyle, enhancing the look of your doors and windows. Your choice of quality, powder-coated colours or timber-look frames, completes the high-quality finish that sets Crimsafe apart.

Crimsafe Classic comes with the assurance and peace-of-mind of a 12-year extended warranty.



Crimsafe Ultimate

Up to seven times stronger than the Australian Standard

Take your home security to the next level with the superior strength, versatility and architectural styling of Crimsafe Ultimate.

This upgraded Crimsafe screen is not only superior - it can withstand an impact that is up to seven times stronger than the level required by the Australian Standard.

Crimsafe Ultimate's incredible strength is achieved through uniquely engineered features, including Screw-Clamp™ technology that secures the 304 structural grade stainless steel mesh to the entire frame with

a vice-like grip. Additionally, Crimsafe Ultimate utilises twice as many screws as Crimsafe Classic, concealed within the fastening system for greater stability and strength. At the same time, a wider, stronger frame improves rigidity and jemmy-resistance against would-be intruders.

Crimsafe Ultimate security screens are available in the widest variety of applications to suit your home or lifestyle needs and come with an extended 15-year warranty for ultimate peace-of-mind.



Crimsafe iQ

The strongest mesh security screen door in Australia

As Australia's strongest, smartest, most technologically advanced mesh security screen door, Crimsafe iQ delivers unrivalled protection for your family, home or business.

Years of research and development has culminated in a security screen door that has passed the toughest, most rigorous burglar-resistance test in the world - the RC2 Test; a test far more stringent than Australian Standards. In fact, Crimsafe iQ is now officially the strongest stainless steel mesh security screen door in Australia.

Engineered with more locking points than other Crimsafe security screen doors, and with reinforced features including anti-crowbar heavy-duty hinges, anti-lift pins and a wider, stronger frame, Crimsafe iQ has proven to be highly resistant to real-world attacks.

With the choice of a mechanical (iQ-m) or electronic (iQ-e) locking options, Crimsafe iQ provides maximum security, convenience and flexibility. The iQ-m door features five individual lock modules, providing ten-point locking and a mechanical lock. The iQ-e door features three lock modules, providing six-point locking system and electronic access options including keypad, Bluetooth and key fob.

Crimsafe iQ-e is our first security screen door to integrate smart technology, providing home and business owners the convenience of setting security functions via a mobile App. With up to 18 unique pin codes to monitor access, auto-locking at night and time-of-day programming, Crimsafe iQ is the smartest way to secure what matters most.

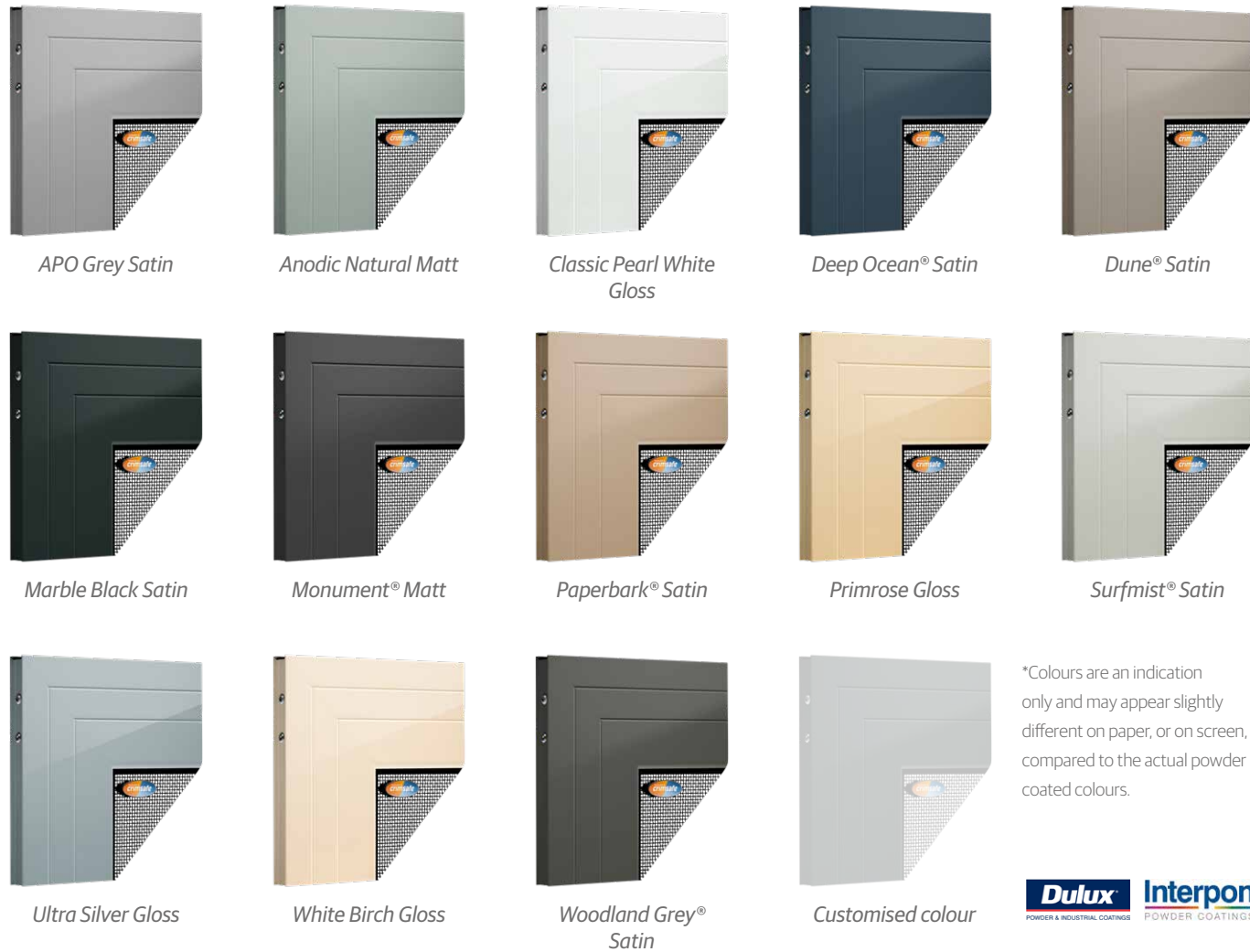
Crimsafe iQ comes with the assurance and peace-of-mind of a 15-year extended warranty. Other features include;

- Programmable access and robust construction - ideal for commercial use
- Airflow - allows through-breezes and cooling from natural air movement
- Heat protection - blocks up to 53% of solar heat gain
- UV protection - blocks up to 62% of UV rays
- Fire protection - blocks 59% of radiant flames and heat
- Insect resistant - prevent 99% of mosquitos from entering
- Storm and cyclone protection - approved for use in cyclone regions C & D



Colour range

Crimsafe products come in a wide range of standard colours with almost any customised colour available on request to suit your home decor. Screens are also available in woodgrain and anodised finishes for seamless integration with various styles of homes.

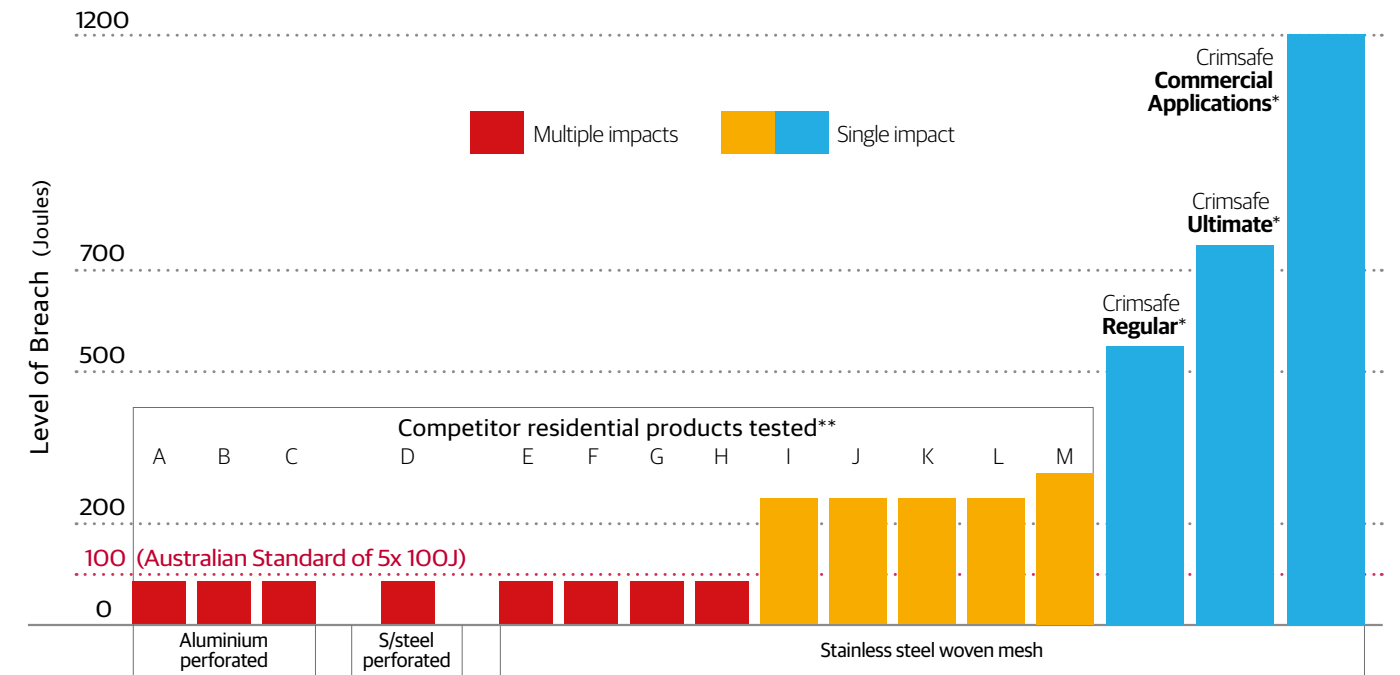


Woodgrain finishes



Crimsafe outperforms the rest

When tested by The University of Queensland, our screens stood up not just against an Australian Standard of 5 x 100 Joule (J) impact, but also against singular impact levels up to 550J (Crimsafe Regular), 750J (Crimsafe Ultimate) and 1200J (Crimsafe Commercial Applications).



Graph prepared by Crimsafe based on tests conducted by The University of Queensland, 2017.

Aluminium and stainless steel perforated products use a single sheet of metal with holes punched in it to create the 'screen'. Woven mesh screens (such as Crimsafe) use wires woven together to form a mesh screen. * Single Impact ** Multiple Impacts

Independent university testing found that Crimsafe significantly outperformed competitor screens and the levels required by the Australian Standards.

Standards and performance levels explained

Q: What is the Australian Standard?

A: Australian Standards for the security screen industry test the force of impact that a security screen can withstand, measured in 'Joules' – a unit of energy. To meet the standard, a security screen must withstand five single impacts of 100 Joules.

Q: What does 100 Joules mean in a real-life example?

A: 100 Joules of energy is roughly equivalent to the impact of a young child running into a glass door.

Q: Do all security screens pass the Australian Standard?

A: No. The University of Queensland testing found that some screens failed the minimum standard required.

Q: Is the Australian Standard adequate?

A: Crimsafe doesn't think so. The average adult male weighing 86kg can easily exert more than 100 Joules of force in a single impact. That's why Crimsafe is engineered to be much stronger than the minimum standard, and clearly stronger than competitor products on the market.

Warranty

Extended warranty up to 15 years

When you invest in Crimsafe, you invest in Australia's strongest security screens. That is why we back the strength, durability and quality of our products with a 10-year Warranty as standard.

For additional peace-of-mind, we also offer the option to extend your warranty to 12-years for Crimsafe Classic, or up to 15-years for Crimsafe Ultimate and Crimsafe iQ – simply register online within 60 days of installation to extend your warranty.

Hardware and accessories may be independently covered by the warranty conditions of the relevant manufacturer or supplier.

For complete terms and conditions go to www.crimsafe.com.au/warranty

Safety, security and so much more

Strong security

Crimsafe's industry leading technology makes it the strongest stainless steel security screen system on the market, proven by independent testing.

Energy efficiency

The greatest heat gain or loss in a home occurs through glass windows and doors. Crimsafe's Tensile-Tuff® stainless steel mesh can help as it:

- Blocks up to 53% of solar heat gain
- Blocks 62% of UV rays
- Limits heat escaping during cold weather.

By helping to moderate the temperature inside your home, Crimsafe helps you enjoy fresh air and save on air conditioning bills.

Protecting children from falls

The National Construction Code specifies various requirements for the prevention of falls from openable windows. Crimsafe meets the National Construction Code requirements for protecting your family from falls from windows and still allows the window to be completely opened for fresh airflow and natural light. Speak to a local Crimsafe Dealer to confirm if these regulations apply to your property.

Fall protection from heights

Each year, more than 50 children fall from windows or balconies in Australia. Tragically, many children suffer a serious injury and some falls are fatal. Crimsafe provides a strong and durable barrier to prevent falls, while still permitting you to confidently open your windows and balcony doors to enjoy a breeze.

Fresh air and breezes

One of the greatest benefits of Crimsafe is the ability to enjoy a breeze and fresh air, without compromising your security.

Unhindered views

Crimsafe's strength comes from the unique combination of Tensile-Tuff® mesh and our Screw-Clamp™ fastening system, meaning there's no need for bars and grilles. The clean lines of powder-coated mesh provide unrestricted views and retain a feeling of open spaces.

Insect protection

Fly screens are designed to keep out insects, but they certainly won't stop an intruder. Crimsafe does both jobs well, keeping out all types of intruders, from insects to burglars.

Storm protection

Crimsafe security screens act as a strong barrier against hailstones and wind-borne debris during a storm, helping to protect glass windows and doors from breaking. Selected Crimsafe products are approved for use in Cyclone regions C & D withstanding impacts up to 44 m/s.

Fire protection

Crimsafe has tested its security screens to meet the highest levels in bushfire protection – BAL FZ when used with a compliant window system. Our security screens provide excellent protection from ember attack, reduces radiant heat and will protect glass from the impact of burning debris.

Fire attenuation

Crimsafe screens block 59% of radiant heat and can slow the spread of fire from one floor to another, or to neighbouring buildings.

Product comparison


Features	Classic	Ultimate	iQ	Commercial
 Strength Strength is measured as the amount of force that the screen can withstand. The Australian Standard is five impacts of 100 Joules.	5x stronger than the Australian Standard* (up to 550 Joules)	7x stronger than the Australian Standard* (up to 750 Joules)	7x stronger than the Australian Standard* (up to 750 Joules & RC2 compliant**)	12x stronger than the Australian Standard* (up to 1200 Joules)
 Fastening method How the mesh is secured into the screen frame	Tamper resistant screws	x2 more tamper resistant screws than Classic	x2 more tamper resistant screws than Classic	x4 more tamper resistant screws than Classic
 Warranty Years of protection covered under your Crimsafe extended warranty	Up to 12	Up to 15	Up to 15	10
 Mesh Crimsafe Tensile-Tuff® stainless steel mesh is 26.5% thicker than typical stainless steel mesh	0.9mm Tensile-Tuff® 304 structural grade	0.9mm Tensile-Tuff® 304 structural grade	0.9mm Tensile-Tuff® 304 structural grade	0.9mm Tensile-Tuff® 304 structural grade
 Clamping System System used to secure mesh into the frame	Carbon Fibre CF6 Screw-Clamp™ technology	Exclusive Screw-Clamp™ technology	Exclusive Screw-Clamp™ technology	Exclusive Commercial grade Screw-Clamp™ technology
 Locking options Can be mechanical or electronic (allowing access by Keypad, Bluetooth or Keyfob)	Mechanical	Mechanical	Mechanical or Electronic	Mechanical
 Locking points Number of secure points where the door locks into the frame	3	3	6 or 10	3
 Applications Versatility of use for securing doors, windows, emergency exits, patio enclosures etc	5	11	1	6
 Colours Range of colours available	Choose from our Standard colour range, or customise with any Dulux or Interpon colour.			
 Price range	\$\$	\$\$\$	\$\$\$\$	\$\$\$\$\$

Technical detail

Specifications	Classic	Ultimate	iQ	Commercial
Impact Strength Testing	Up to 550 Joules*	Up to 750 Joules*	Up to 750 Joules*	Up to 1200 Joules*
Australian Made	✓	✓	✓	✓
Exceeds Australian Standard (AS5041-2003) Impact Testing	✓	✓	✓	✓
RC2 level of European Standards (EN1627:2011 RC2)**			✓	
Anti-lift Pins			✓	
Heavy-duty Hinges			✓	
Custom designed to your needs	✓	✓	✓	✓
AS Powder Coating Standards	✓	✓	✓	✓
Custom Colour Choices	Yes	Yes	Yes	Yes
Insect Protection	✓	✓	✓	✓
UV Protection	Up to 62%	Up to 62%	Up to 62%	Up to 62%
Solar Heat Gain Prevention	Up to 53%	Up to 53%	Up to 53%	Up to 53%
Locking Points	3	3	6 or 10	3
Mesh Rating	Tensile-Tuff® 0.9mm 304 structural grade	Tensile-Tuff® 0.9mm 304 structural grade	Tensile-Tuff® 0.9mm 304 structural grade	Tensile-Tuff® 0.9mm 304 structural grade
Jemmy resistant	✓	✓	✓	✓
Knife Shear Test Pass	✓	✓	✓	✓
Corrosion Resistance - (Salt Spray and Prohesion Accelerated Test)	3,000 Hours	3,000 Hours	3,000 Hours	3,000 Hours
Fall Prevention Suitable		✓	✓	✓
Build-out	Optional	Optional	As standard	Optional
Midrail	Available late 2020	✓	✓	✓
Bushfire BAL Rating		FZ***	FZ***	FZ***
Approved for Region C (Cyclonic) and Region D (Severe Cyclonic)		✓ Protects from debris up to 392km/h	✓ Protects from debris up to 392km/h	✓ Protects from debris up to 392km/h
Fire attenuation	Crimsafe has products that are suitable for Fire Attenuation purposes. Please contact us for further information.			

* Singular impact test. ** Compliant with EN1627:2011 RC2 - the most stringent security screen test in the world. *** When used with a compliant glass window system. BAL-FZ is the highest bushfire attack level, with direct exposure to flames, heat flux and ember attack.

Applications	Classic	Ultimate	iQ	Commercial
DOORS	Hinged	✓	✓	✓
	Sliding	✓	✓	✓
	Stacking	✓	✓	✓
	French	✓	✓	✓
	Bi-Fold		✓	
WINDOWS	Fixed	✓		✓
	Sliding		✓	
	Hinged - inward or outward swinging		✓	
	Safe S Cape - inward or outward swinging		✓	
OUTDOOR	Patio		✓	
	Cyclone		✓	✓
	Bushfire		✓	



Advaita Way House, an award-winning architecturally designed home.

The architect chose Crimsafe specifically for its energy efficiency properties, and also the clear unhindered views that enabled the home to blend seamlessly with the natural landscape.



Crimsafe proudly partners with:



AU CRM034210/20

Crimsafe Security Systems Pty Ltd
Toll Free: 1800 274 672 Email: info@crimsafe.com.au
crimsafe.com.au